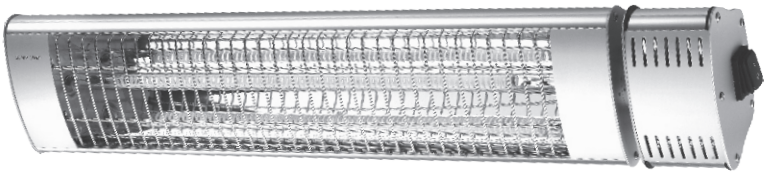




PATIO INFRARED HEATER



With a remote control

Unit 6, Dunboyne Industrial Estate, Dunboyne, Co. Meath

IMPORTANT INFORMATION

Please carefully read the Operation Manual before using the infrared heater.

This Operation Manual contains the important information on your safety, as well as some recommendations on proper use of the appliance and its maintenance.

Keep the Operation Manual along with the warranty certificate, sales receipt, and, if possible, cardboard package and packing material.

The purchased infrared may somewhat differ from one described in the Manual, but this does not affect the methods of use and operation.

Important precautions and instructions given in this Manual do not include all possible modes and situations, which can be encountered. It is necessary to understand that common sense, cautiousness, and carefulness are the factors, which cannot be "integrated" to any product.

SAFETY INSTRUCTIONS

- **Read the instruction before using.** During use of the infrared heater, it is necessary to observe some precautions. Improper operation with disregard of precautions may result in infliction of harm to health of the user and other people, as well as in infliction of damage to their property.
- Use only the voltage specified on the rating plate of the heater.
- **ONLY** connect the appliance to a properly installed socket-outlet with earth contact.
- The heater should be connected to the electric mains equipped with an automatic circuit breaker.
- The unit must be handled with care, and avoid vibration or hitting.
- **WARNING: FIRE RISK EXISTS IF THE HEATER IS COVERED BY OR POSITIONED CLOSE TO CURTAINS OR OTHER COMBUSTIBLE MATERIALS.**
- Do not use the appliance areas where gasoline, paint or other flammable liquids are used or stored.
- Do not use the appliance in particularly duty and explosive areas.
- Do not use the appliance in a building site, green house, barn or stable where there's flammable dust.
- Do not use the appliance as a sauna heater.
- Do not use this unit in the place of animal propagating and rising.
- **Warming:** Do not touch the radiating plate. To avoid burns, do not touch the appliance surface by hand and other body parts. It is also necessary to exclude the possibility of touching the heater radiating boards by a person (including accidental) via proper instructions and allocation of the heater in an inaccessible place.
It keeps hot for a period after shut down. Potential danger would be occurring when touching it during this period.
- Do not place any items of clothing, hand towels or similar over the heater to dry. Risk of overheating and fire hazard.
- Do not leave the heater unattended whilst in use.
- Do not use this heater on a wet surface, or where it can fall or be pushed into water.
- Do not reach for an appliance that has fallen into water. Switch off at supply and unplug immediately.
- If the supply cord is damaged, it must be replaced by the manufacturer, its service agent or similarly qualified persons in order to avoid a hazard.
- If the heater is defective, it must be checked and repaired by the manufacturer, its service agent or similarly qualified persons in order to avoid a hazard.

- Do not operate appliance with wet hands.
- Use this appliance only as described in this manual. Any other use is not recommended by the manufacturer and may cause fire, electric shock or injury.
- Do not use abrasive cleaning products on this appliance. Clean with a damp cloth (not wet) rinsed in hot soapy water only. Always remove plug from the mains supply before cleaning.
- The heater must be installed at least 1.8 m above the floor.
- The heater must not be located immediately below a socket-outlet. Socket-outlet should not be located at the back of the heater. They should be located outside the physical footprint of the units to minimize heat build-up behind the heater.
- The heater is to be installed so that switches and other controls cannot be touched by a person in the bath or shower.
- If the heater is to be mounted on an incline (eg. Vaulted ceiling), ensure the electrical connection is located at that lowest point of the heater.
- Do not connect the appliance to the mains source until it has been installed in its final location and adjusted to the position it will be used in.
- Do not operate with the cord coiled up as this could cause a build up of heat, which could pose a hazard.
- The use of an extension cord with this appliance is not recommended.
- Do not allow cord to come in contact with heated surfaces during operation.
- Do not run cord under carpeting, throw rugs or runners etc. Arrange cord away from areas where it is likely to be tripped over.
- Children of less than 3 years should be kept away unless continuously supervised.
- Children aged from 3 years and less than 8 years shall only switch on/off the appliance provided that it has been placed or installed in its intended normal operating position and they have been given supervision or instruction concerning use of the appliance in a safe way and understand the hazards involved. Children aged from 3 years and less than 8 years shall not plug in, regulate and clean the appliance or perform user maintenance.
- This appliance can be used by children aged from 8 years and above and persons with reduced physical, sensory or mental capabilities or lack of experience and knowledge if they have been given supervision or instruction concerning use of the appliance in a safe way and understand the hazards involved. Children shall not play with the appliance. Cleaning and user maintenance shall not be made by children without supervision.
- The appliance is only intended for the purpose described in user manual.
- Do not use appliance or any part of the appliance out of the intended use to avoid risk.
- The use of attachments which are not recommended or sold by the appliance manufacturer may cause a risk of injury to persons.
- **CAUTION** — some parts of this product can become very hot and cause burns. Particular attention has to be given where children and vulnerable people are present.
- Install and operate the heater in strictly horizontal position on the ceiling or ceiling structural elements. At that, thermal resistance of the ceiling coating material should be at least 80 °C.
- **WARNING:** This heater is not equipped with a device to control the room temperature. Do not use this heater in small rooms when they are occupied by persons not capable of leaving the room on their own, unless constant supervision is provided.
- If the customer would like to have soft copy of the IM, please kindly contact with our customer service.

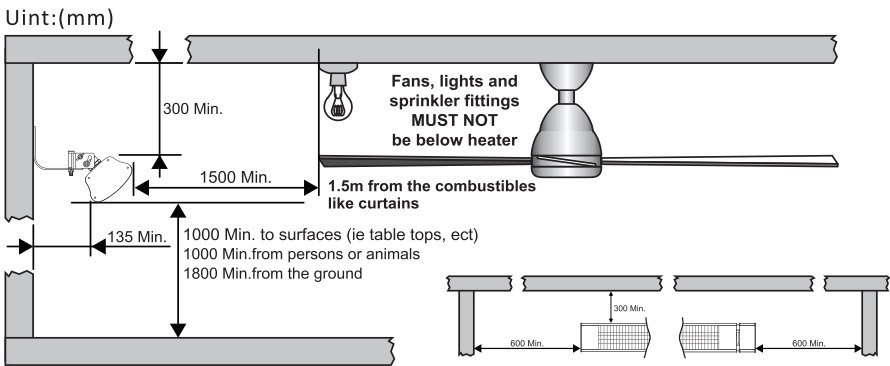
2 Installation

2.1 Safe distances required for installation

Attention: The appliance must only be operated in a horizontal position with max $\pm 5^\circ$ slope.

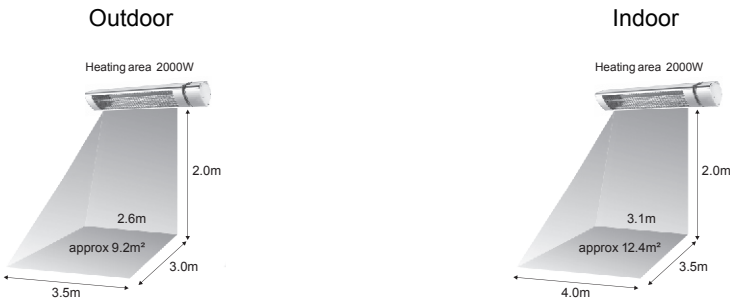
Never install the appliance on a combustible surface (plastics, nylon, carton etc.)
When the electrical connection is outdoor, it is recommended that a waterproof socket is used for the connection. Otherwise, the plug should be connected to a socket indoor.
Install the device at a minimum distance of

- 1.8m above the ground
- 0.6m from walls to both ends
- 0.3m from the ceiling
- 1.5m from the combustibles like curtains;
- 1m from persons or animals



2.2 HEATING AREA

The heater produces radiant heat which heats objects rather than the air. Therefore, it is imperative that objects to be heated (i.e. People), are within the direct radiant footprint of the heater. The below diagrams show the approximate heating area for each model based on an indoor and outdoor enclosed environment. The diagram shows that the maximum heat output is found directly under the heater, and the temperature decreases as the user move away from the heater.



2.3 Installation process:

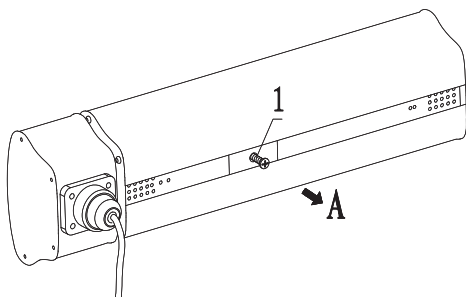
2.3.1.: Check the accessories packed with the appliance.

series	Parts name	Specification	Quantity	
1	Screw	M6x16	1	On the heater
2	Bracket set	Aluminum	1	In the package
2A	Bolt+Nut	M6x100+M6	1	Fixed on the No.2 Bracket set
2B	Bolt+Nut	M8x100+M8	1	Fixed on the No.2 Bracket set
3	Expansion bolt	M6x60	2	In the package
4	Hanger	STEEL	1	In the package
5	Bolt	M8x60	1	In the package
5A	Nut	M8	1	Fixed on NO.5 Bolt M8*60
6	Washer	Ø6.2xØ14x1	1	Fixed on No.2A Bolt M6*100
7	Washer	Ø8.2xØ16x1	3	Fixed on Bolt of No.2B and No.5
8	Spring washer	Ø8.2xØ11x1.5	1	2pcs Fixed on Bolt of No.2B and 1 pc on Bolt of

Tools needed: Phillips Screwdriver , spanner. These tools need be prepared by the final user.

2.3.2: Take off the screw M6x16 from the heater by screwdriver.

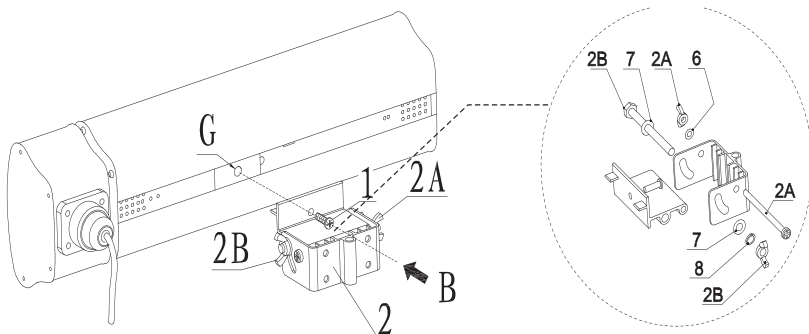
Attention : Please operate in the direction A.



2.3.3: Fix the bracket set (no.2 of accessories list) on the heater

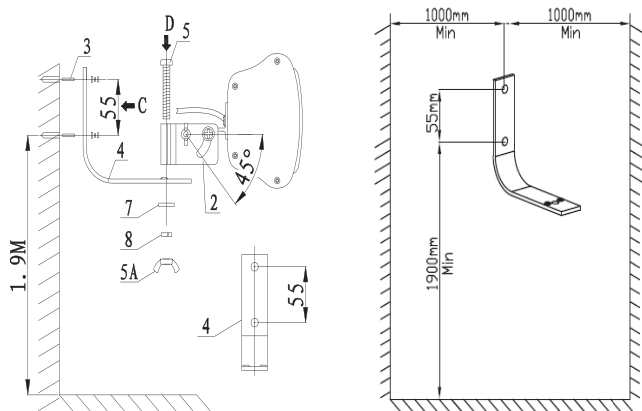
By the screw M6x16, which is took off from the step 1.

Attention : Please operate in the direction B.



2.3.4: Drill two holes ($\Phi 8 \times 40$) on the wall, its distance is **55mm**. Install the hanger (No.4 in accessories list) on the wall with 2pcs M6*60 (No.3 in accessories list) by the spanner.

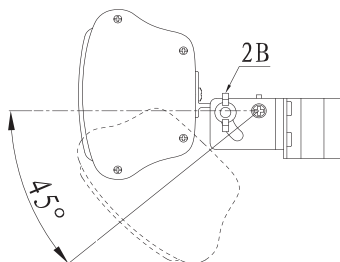
Attention : Min. height of 1.9M from the lower hole to the floor must be kept.



2.3.5: Fix the heater on the hanger with the bolt M8x60 (No.4 in accessories list), fasten the nut M8 (No.5A) by Hand and Phillips Screwdriver.

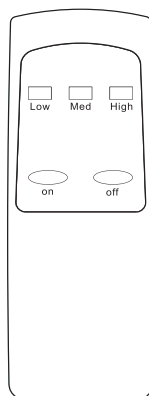
2.3.6: Tilting angle adjustment. Loose the nut M8 (No. 2B), And adjust the tilting angle by hand. The angle is to be set up to 45 degree

2.3.7: Finally, fasten the nut M8 (no. 2B) by Hand and Phillips Screwdriver.



4. How to operate

- 4.1 Plug the heater in the main power, and press the switch on, the pilot lamp will flash and The heater is in stand-by mode;
- 4.2 Press the key "ON" on the remote control, the buzzer responds one sound. The pilot will be light. The heater will start work in low power Mode in first time using, or work in the pre-set power model;
- 4.3, Press the KEY "LOW", setthe heater work in 33% ofthe rated power. The buzzer responds one bee sound;
- 4.4, Press the KEY "MED", could set the heater work in 66% Of the rated power. The buzzer responds one bee sound;
- 4.5, Press the KEY "HIGH", could set the heater work in 100% Of the rated power. The buzzer responds one bee sound;
- 4,6 Press the KEY "OFF", the buzzer responds one bee sound, the heater



is in stand-by mode;

4.2.6, Push the switch off, the heater will be power off .

Remark:

- After switching on the appliance for the first time and following extended periods on non-use, the appliance may smell for a short time.
- It is normal to see two dark points on the bulb element in the following few minutes of switching on. This is normal, and will not affect the performance of the unit.
- Attention! Do not look longer time into the light.
- **The installation must be equipped with an all-pole disconnection mechanism with a break contact distance of at least 3mm**

5 Cleaning:

- 1, disconnect the appliance from the power supply system;
- 2, After the appliance has cooled down, the housing can be wiped dry;
- 3, Do not touch the bulb element with your fingers, since stains could build up from such a contact.
- 4, The reflector should be cleaned regularly by professionals.
- 5, Do not use any abrasive or caustic cleaning agents!
- 6, Never immerse the appliance in water! Danger to life!

6 Maintenance

Any maintenance or repairs including replacing the bulb element should only be carried out by a qualified electrician.

7 Specification

Model	OLEIR2000-1	OLEIR2000-3
Switch	Yes	Yes
Power supply	220-240V~50Hz	220-240V~50Hz
Watt	2000W	2000W
Insulation	Class I	Class I
IP	IP65	IP65

TROUBLESHOOTING

Possible malfunctions are given in Table below.

SYMPTOM	CAUSE
Will not heat / No operation indicator	Check that power is connected and switched on
Heater smells when first used.	This is caused by oil or dust left over from the manufacturing process and will stop after a short time
Faint smell for short periods after turning on the heater	This is normal and should stop after a short time

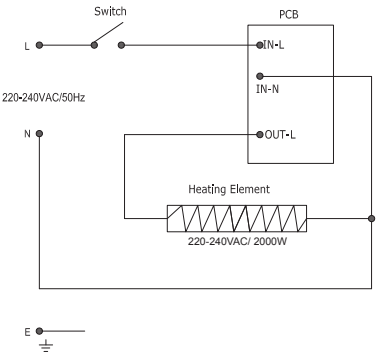
Heater smells when turned on after periods of no use	Build-up of debris and dust on the heater, Switch the heater off and allow it to cool down and then clean
Clinking noises when heater is turned on and after being turned off	This is expansion and contraction noises of the heaters metal components and is normal
Poor heating performance	Exposure to extreme ambient conditions such as high winds / excessively cold temperatures can lower the heating performance of an outdoor installation Unit is not installed in correct position, possibly too high or heater is too small for recommended area.

When to contact the authorized service or seller

There are no user serviceable parts in this appliance, only an authorised person can such as a qualified electrician can service or maintain this appliance.

SYMPTOM	CAUSE
There is a burning smell and or strange sounds (other than normal expansion and contraction noises) coming from the unit	Turn off the heater, and contact seller.
When associated circuit breaker (safety, ground) is thrown or a fuse is blown	Turn off the heater, and contact your authorized electrical installer

WIRING SCHEMATIC DIAGRAM



Correct Disposal ofthis product



This marking indicates that this product should not be disposed with other household wastes throughout the EU. To prevent possible harm to the environment or human health from uncontrolled waste disposal, recycle it responsibly to promote the sustainable reuse of material resources. To return your used device, please use the return and collection systems or contact the retailer where the product was purchased. They can take this product for environmental safe recycling.